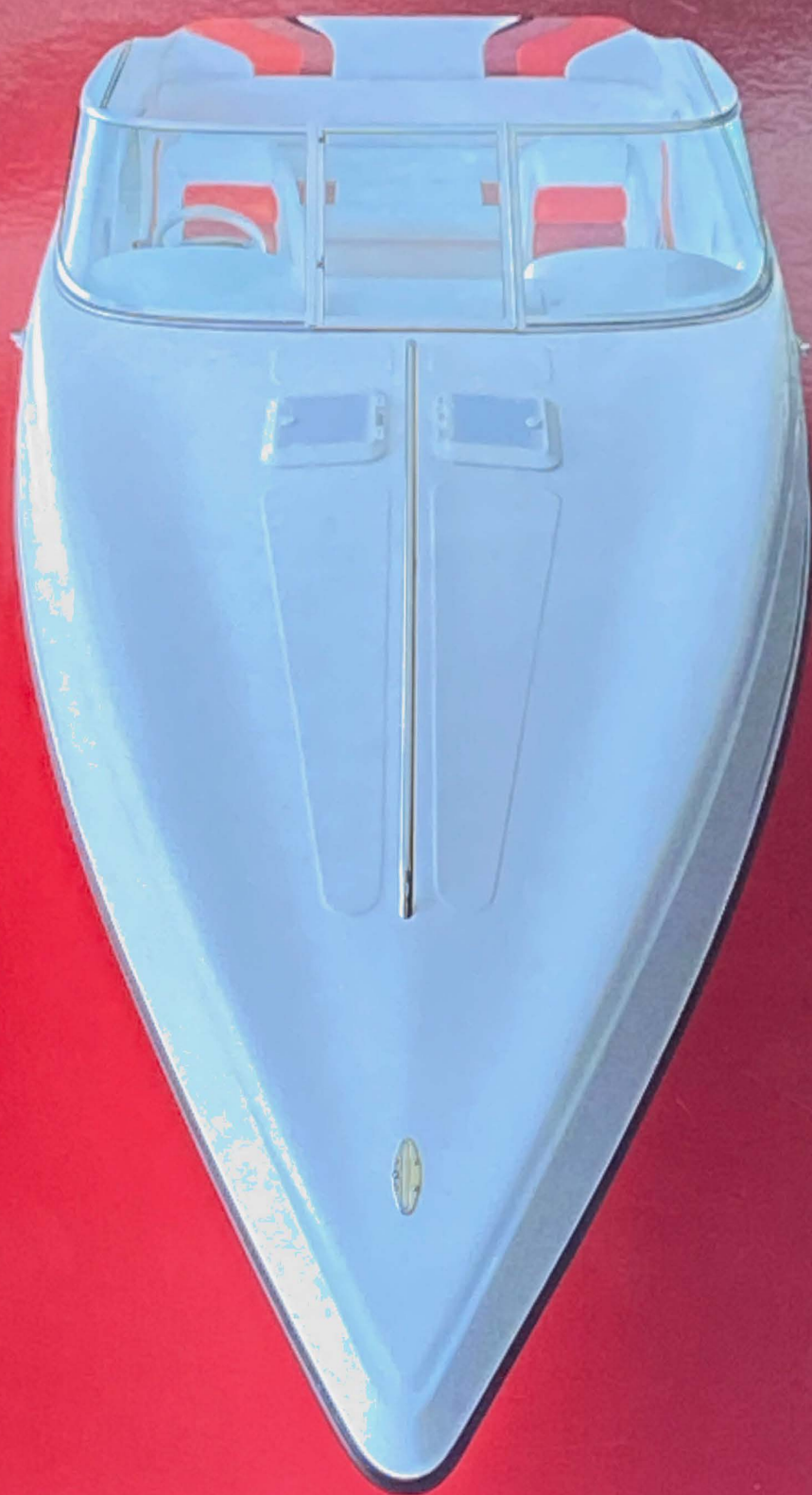


CARAVELLE



1996

Ever since Caravelle first began building boats thirty years ago, we've offered a total commitment to creating exciting boats. Boats with style, flair and personality. Every model in the 1996 Caravelle product line makes its own strong and individual statement, so that your new Caravelle will be just right for you.



Caravelle 1900 SE Bow Rider

CARAVELLE

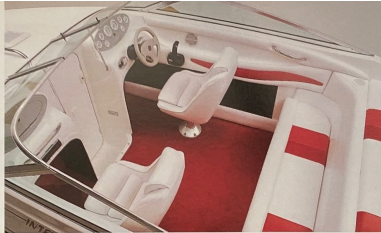


One look at a 1996 Caravelle Interceptor and you know that you're in for something special. These are extraordinary sport boats that are pure of purpose in both design and intent. An Interceptor is refreshingly unique. It will satisfy your desire for innovative style without sacrificing the comfort and convenience you require. Interceptor...A boat that will excite you even before your hand touches the throttle.

Caravelle 232 Interceptor Sport Cabin



A. Underneath the sculpted lines of the foredeck you will discover a surprisingly roomy cabin with sit-up head room and a six foot sleeping berth. The comfortable cushions conceal three generous storage compartments and a compartment for the optional portable head.



A. The cockpit of the Interceptor is a refreshing blend of form and function. Molded-in fiberglass armrests flow smoothly into the dash consoles. The contoured bench seat cushions are backed with Proboard plastic composite frames (instead of wood) and rest on a molded-in fiberglass base that is an integral part of the deck. This unique design is stronger and more rigid than conventional sundeck/bench seat construction. It significantly reduces vibration and noise.



A. Dramatic lines on the bow of the Interceptor (reminiscent of a classic sports car) cause observers to give this unique boat second, third and fourth looks.

brilliant sun, and miles of beautiful clear water ahead. Once you've adjusted to the sense of freedom surrounding you in your new Interceptor, you'll begin to focus on an interior that was appointed to satisfy. Classic white analog gauges strategically positioned, comfortable armrest and shifter position, adjustable steering column, even a drink holder in just the right spot. Every detail compliments the sensuous styling that first attracted you.

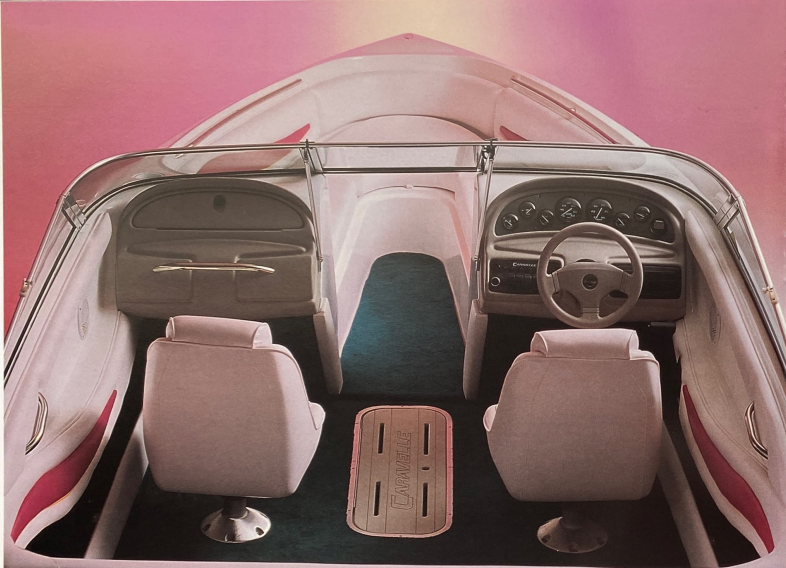
Interceptor 232 Sport Cabin

Specifications

Centerline: 23'0" / 7.01 m
 Maximum Beam: 10'7" / 2.54 m
 Maximum Engine: 7.4 liter
 Fuel Capacity: 50 gal. / 194 liter
 Weight (approx): 3200 lb. / 1445 kg

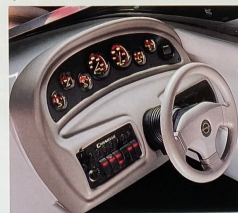


We know we can't be all things to all people. And that's the principle behind the Interceptor. Instead of designing a generic boat that a lot of people will like a little, we design boats that a select few can really love. ➤



← High-grade elliptical stainless steel hand rails are thoughtfully placed throughout the Interceptor. These thru-bolted rails provide comfort, convenience and safety.

Classic backlit gauges are easily read, and their view is unobstructed by the steering wheel. Rocker switches are smoothly integrated into the design and can be comfortably adjusted by the driver. ↗



Specifications

Centerline: 23'0" / 7.01 m
 Maximum Beam: 10'0" / 2.54 m
 Maximum Engine: 7.4 liter
 Fuel Capacity: 36 gal. / 140 liter
 Weight (approx): 3000 lb. / 1356 kg.

Interceptor 232 Bow Rider

The unique silhouette and aggressive stance of the Interceptor 232 bow rider promise exhilarating performance. This promise is more than gel coat deep, thanks to a powerful V-8 engine combined with an efficient hull design. They provide an impressive hole shot and top end speed as well as excellent handling and responsiveness.



Caravelle 1900 SE Bow Rider

Chances are, if you are in the market for a family boat, you will consider an open bow runabout. Good idea. Chances are, if you are an informed buyer, you will consider a Caravelle family runabout. Good plan. Chances are, if you study the following three Caravelle runabouts, and examine the numerous features, superior craftsmanship and outstanding value of a Caravelle, you will become a satisfied Caravelle owner. Great choice.



Legend 209 Bow Rider

Timeless beauty, elegant luxury and superior performance - each was an uncompromising goal in the creation of the Legend 209 bow rider. Here is a boat immediately recognizable as a luxury runabout. The flowing exterior lines suggest elegance without flamboyance. Interior space has been maximized with a spacious 102 inch beam. The Legend 209 also offers precise handling, confidence inspiring stability and comfort even at high speeds.

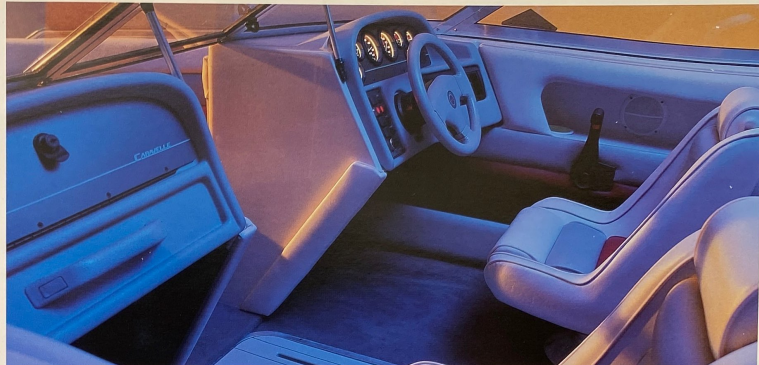
Spacious and luxurious, the cockpit of the Legend 209 delivers substantial room for passengers and generous storage for any items you may need on your excursion >



A The extra large stainless steel ski tow eye is another of the seemingly minor details that make the Legend 209 a pleasure on the water. Skiers will appreciate the ease with which a ski rope can be attached to the ski tow eye.

Specifications

Centerline: 20'6" / 6.25 m
Maximum Beam: 102" / 2.59 m
Maximum Engine: 5.8 liter
Fuel Capacity: 36 gal. / 140 liter
Weight (approx): 2900 lb. / 1310 kg.



A As you examine the 1900 SE bow rider you'll notice the pleasing interior conveys a sense of harmony with the boat. The texture and color of the instrument panel and glove box blend with the upholstery. The controls and analog gauges have been carefully positioned for instant accessibility and quick reading.

1900 SE Bow Rider

It's a given that you want your family's next boat to be functional, safe and affordable. But is it too much to ask for a comfortable interior and great styling? Is it unreasonable to want a boat that's fun to drive? Not if your next boat is a Caravelle 1900 SE bow rider, a boat you can afford to get excited about.

Y Padded pockets in the interior side panels add a sense of luxury and completeness to the interior of the 1900 SE. They also keep important features (stereo speakers, cup holders and passenger grab handles) in a logical place so your passengers can enjoy the trip as much as you do.



← One touch of the throttle and the 1900 SE quickly delivers an exhilarating driving experience, thanks to an enthusiastic and efficient stern drive engine.

- Specifications**
Centerline: 19'0" / 5.79 m
Maximum Beam: 92" / 2.34 m
Maximum Engine: 5.0 liter
Fuel Capacity: 30 gal. / 117 liter
Weight (approx): 2400 lb. / 1085 kg

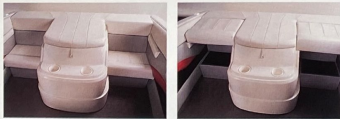


1750 SE Bow Rider

Instrumentation in the 1750 SE includes critical engine monitoring gauges as well as a tachometer, speedometer and a trim indicator gauge. A straight-forward design that's more unusual than you might think. >



The Caravelle 1750 SE is fun to drive. Lots of fun. Yet fun is only one of the qualities that set the 1750 SE apart from its class. We engineered it in the same manner as we engineer our larger boats. To offer obvious quality in a class that sees mostly compromise. To add thoughtful details that provide comfort and beauty. To give the 1750 SE the quality, spaciousness and a level of fit and finish normally reserved for much more expensive boats.



> A molded fiberglass motor box adds beauty and durability to an interior that features convertible rear jump seats. The seat cushions can be easily moved into the upper position to create a comfortable sun lounge area.

Specifications

*Centerline: 17'4" / 5.29 m
Maximum Beam: 85" / 2.16 m
Standard Engine: 3.0 liter
Fuel Capacity: 20 gal. / 78 liter
Weight (approx): 2000 lb. / 904 kg*

< Take a closer look at the 1750 SE and you will see why Caravelle has been setting the standard for seventeen foot runabouts. While others continually remove features to "keep the price down", Caravelle continues to add thoughtful details that provide comfort and beauty. Thick padded seats with all plastic construction, ventilated in-floor ski storage, passenger grab handles and full length stainless steel bow rails are only a few of the numerous details that make the unique difference.



Value and luxury are rarely spoken about in the same sentence, unless Caravelle is being discussed. And especially a Caravelle cuddy cabin. These boats deliver a premium level of standard features, luxury and performance for thousands less than you might expect.



Caravelle 1900 SE Cuddy Cabin



Legend 209 Cuddy Cabin

From the tip of the attractive stainless steel bow rail to the rear of the large integral swim platform, the new 1996 Caravelle cuddy cabins offer value and luxury. Both the Legend 209 and the 1900 SE have wide cockpits, with plenty of room for passengers and gear. The cabin doors are wide, further enhancing the fresh, open feeling in the interiors of these boats.



▲ The Legend 209 is big on interior space, and this roomy cockpit is big on detail, too. Notice how the upholstery colors in the cockpit blend with the instrument panel and cabin interior. The two molded in fiberglass steps at the bow, floor smoothly with the rest of the lines in the cockpit. Even the clear, curved windshield features a sleek, rounded frame.

Specifications 209

Centerline: 20'6" / 6.25 m
 Maximum Beam: 10'2" / 2.59 m
 Maximum Engine: 5.8 liter
 Fuel Capacity: 50 gal. / 194 liter
 Weight (approx): 3000 lb. / 1356 kg.

Specifications 1900

Centerline: 19'0" / 5.79 m
 Maximum Beam: 9'2" / 2.34 m
 Maximum Engine: 5.0 liter
 Fuel Capacity: 30 gal. / 117 liter
 Weight (approx): 2500 lb. / 1130 kg.

1900 SE Cuddy Cabin

Welcome the open feeling as you enter the 1900 SE cuddy cabin through the large cabin door. The cabin features sit-up headroom as well as a six foot sleeping berth. ▼



Hand crafted interiors offer luxury and durability in the 1900 SE cuddy cabin. The captain's chair, passenger lounge seat and the rear jump seat cushions are all constructed of sturdy plastic composite materials (instead of wood). The cushions are covered with heavy duty expanded vinyl with foam backing that has excellent memory retention. ➤



Relax and enjoy an early morning of fishing in a Caravelle fish and ski. These boats offer the best of two worlds. You can have a great fishing boat without sacrificing the comfort, safety and good looks of a runabout. When you buy a Caravelle fish and ski, it's like buying one boat and getting another free.

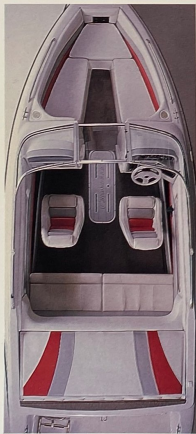


1750 SE Fish & Ski



A You don't have to sacrifice the great looks of a sleek runabout to enjoy a well equipped fishing boat.

1900 SE Fish & Ski



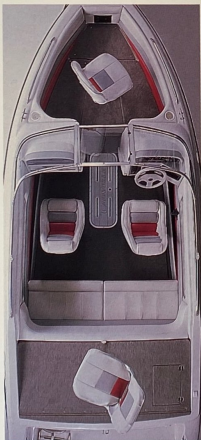
One feature that separates the 1900 SE fish and ski from the competition is the ease with which the boat can be converted from a ski boat to a fishing boat.

To prepare the bow rider area for fishing, simply unsnap the padded bow cushions and store them in the in-floor storage compartment. Insert the bow filler section and mount the lightweight molded plastic fishing chair. >

Unlike many of our competitors, a Caravelle fish and ski does not require you to manhandle heavy seats from the cockpit area to use as fishing chairs. >

< When the 1900 SE fish and ski is converted for skiing you can retain all the comfort and luxury of a runabout. All the fishing accessories are easily stored out of sight.

To convert the sundeck, remove the sundeck pad and store it under the rear bench seat. This will reveal the carpeted casing deck with a built in live well. You can then mount the rear fishing chair that is conveniently stored under the sundeck.



Specifications 1900 SE

Centerline: 19'0" / 5.79 m
 Maximum Beam: 92" / 2.34 m
 Maximum Engine: 5.0 liter
 Fuel Capacity: 30 gal. / 117 liter
 Weight (approx): 2400 lb. / 1085 kg

1750 SE Fish & Ski

Although others have tried to imitate the Caravelle fish and skis, no one has been able to duplicate the blend of styling, features and value. Unlike shallow bass boat fish and skis, a Caravelle is deep and secure. Conversion is easy. The seats and cushions are lightweight and easily fit in one of the generous, built in storage compartments.



A We designed our fish and skis to truly be family fishing boats. The depth of our boats provides safety and comfort. Even our fishing chairs are safer. The durable, all plastic chairs are lightweight and free from heavy metal hinges that can easily pinch fingers.

Specifications 1750 SE

Centerline: 17'4" / 5.28 m
 Maximum Beam: 85" / 2.16 m
 Standard Engine: 3.0 liter
 Fuel Capacity: 20 gal. / 78 liter
 Weight (approx): 2000 lb. / 904 kg



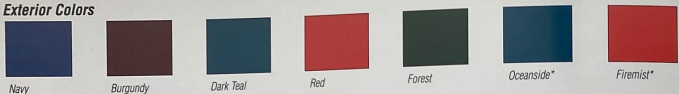
< The standard trolling motor panel in the bow of a Caravelle fish and ski includes a receptacle with chargeback feature for a 12/24 volt trolling motor and a livewell aerator control switch with indicator light.

You can enjoy a comfortable ride to your favorite fishing spot in a Caravelle fish and ski. The dependable stern drive that powers your boat is quieter, smoother running, and more fuel efficient than a two-cycle outboard engine. Y

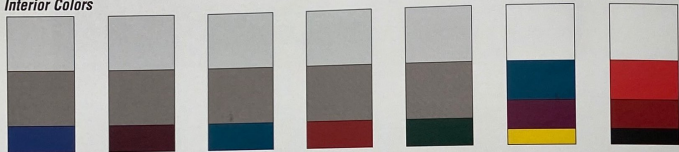


1996 Caravelle Color Options

Exterior Colors



Interior Colors



*Available only with a sun deck interior

1996 Caravelle Accessories



The preferred option package combines three of our most popular options into one economical package. Adjustable lift steering wheel, Kenwood® digital stereo with four speakers and clock, Humminbird® digital depth sounder with alarm.



Our color coordinated Sunbrella™ canvas provides great protection from the elements. It is the best marine material for protection against mildew, mold and fading.

Standard convertible top.



Further enhance the performance of your Interceptor by specifying an optional open exhaust package. The open exhaust package is available in three versions: constant open exhaust, manual switchable exhaust and electric switchable exhaust.



Optional side and aft curtains.



Convert your bow rider seats into a roomy sun lounge area by specifying the optional bow filler cushions.



Optional bow cover and cockpit cover.

1996 Caravelle Standard Features and Options

S - Standard O - Optional	232 SC	232 BR	209 BR	1900 BR	1750 BR	209 CC	1900 CC	1900 FS	1750 FS
Custom dash with backlit instrumentation	S	S	S	S	S	S	S	S	S
Trim indicator	S	S	S	S	S	S	S	S	S
Fuel gauge	S	S	S	S	S	S	S	S	S
Oil pressure gauge	S	S	S	S	S	S	S	S	S
Speedometer	S	S	S	S	S	S	S	S	S
Tachometer	S	S	S	S	S	S	S	S	S
Volt meter	S	S	S	S	S	S	S	S	S
Water temperature gauge	S	S	S	S	S	S	S	S	S
Hour meter	S	S	S	S	S	S	S	S	S
Twelve volt receptacle	S	S	S	S	S	S	S	S	S
Humminbird® digital depth sounder with alarm	S	O	O	O	O	O	O	O	O
Circuit breakers	O	S	S	S	S	S	S	S	S
AM/FM stereo cassette player with two speakers	S	S	S	S	S	S	S	S	S
Digital AM/FM stereo cassette player with four speakers and clock	O	O	O	O	O	O	O	O	O
Tilt steering	O	O	O	O	O	O	O	O	O
Power trim & tilt	S	S	S	S	S	S	S	S	S
Concealed electric horn	S	S	S	S	S	S	S	S	S
Cockpit courtesy lights	S	S	S	S	S	S	S	S	S
Insulated ice box with overboard drain	S	S	S	S	S	S	S	S	S
Portable ice chest	S	S	S	S	S	S	S	S	S
Two tier drink holders	S	S	S	S	S	S	S	S	S
Clear curve full glass windshield	S	S	S	S	S	S	S	S	S
Adjustable driver's seat	S	S	S	S	S	S	S	S	S
Convertible jump seats	S	S	O	O	O	O	O	S	S
Bench seating with sundeck	S	S	O	O	O	O	O	S	S
Bow filler cushion	O	O	O	O	O	O	O	O	O
Interior arm rests	S	S	S	S	S	S	S	S	S
Interior grab rails	S	S	S	S	S	S	S	S	S
Side panel storage	S	S	S	S	S	S	S	S	S
Carpeted bow storage compartments	S	S	S	S	S	S	S	S	S
In floor storage with ventilated hinged lid	S	S	S	S	S	S	S	S	S
Convertible top and boot	S	S	S	S	S	S	S	S	S
Sunbrella™ bow cover	O	O	O	O	O	O	O	O	O
Sunbrella™ side & aft curtains	O	O	O	O	O	O	O	O	O
Sunbrella™ cockpit cover	O	O	O	O	O	O	O	O	O
Wash thru curtain	O	O	O	O	O	O	O	O	O
Open exhaust	O	O	O	O	O	O	O	O	O
Thru-bolted custom stainless steel bow rails	S	S	S	S	S	S	S	S	S
Thru-bolted stainless steel cleats & ski tow	S	S	S	S	S	S	S	S	S
Thru-bolted two step stainless steel swim ladder & handrail	S	S	S	S	S	S	S	S	S
Integral swim platform with "diamond-step" non-skid surface	S	S	S	S	S	S	S	S	S
Cabin lighting	S	S	S	S	S	S	S	S	S
Deck hatch	S	S	S	S	S	S	S	S	S
Locking cabin door	S	S	S	S	S	S	S	S	S
Porta potty	O	O	O	O	O	O	O	S	S
Aerated live well								S	S
Bow panel for 12/24 volt trolling motor								S	S
Trolling motor mounting area								S	S
Two removable fishing chairs with pedestals								S	S
Removable carpeted bow insert for forward fishing chair								S	S
Removable bow cushions								S	S
Removable bow light								S	S
Removable sundeck pad								S	S
Trolling motor battery tray								S	S

Specifications and features subject to change without notice. Some features shown may be optional.

Photography: Scott Gilley
Design/Digital Production: Tom Quinn
Concept/Copy: Russell Lovers
Special Thanks to the Karabel Motor
Boat and Boatworks, Eureka, AL.



Quality assurance at Caravelle is motivated by our desire for customer satisfaction, and our Five Year Structural Warranty guarantee it.



© Copyright 1996 Caravelle Boats, Inc. P.O. Box 1899 Americus, Georgia, 31709
912-924-1185 Fax: 912-924-1030



Caravelle Boats, Inc • P.O. Box 1899 Americus, GA 31709 • 912-924-1185